

Expand

Your Horizons
in Northern Kentucky



TRI-ED

Tri-County Economic
Development Corporation

NorthernKentuckyUSA.com



Northern Kentucky, where you can...

Increase your assets...

Accelerate your growth...

Enhance your support...

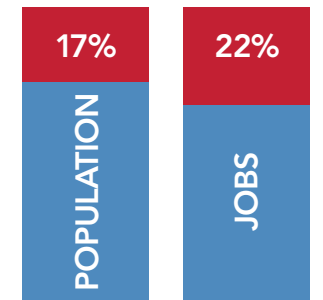
Magnify your success...

Expand your horizons in Northern Kentucky.

There are very good reasons why 500+ primary industry companies have located or expanded their operations in Northern Kentucky over the last 20 years. This thriving region now serves as the North American, U.S. divisional or service headquarters for a variety of global corporate giants across all industries. It supports smaller, entrepreneurial firms that recognize Northern Kentucky as an innovative and energetic place to succeed and grow. Corporate office, advanced manufacturing and technology firms are drawn by lower operating costs, a skilled and dependable workforce, and a central location that offers easy access to domestic and international travel for a more cost-effective way of reaching a large customer base. They stay because those elements continue to pay off in higher profits and a strong competitive stance in the global market.

Increase your assets.

New and expanding businesses get a jump start from the innovative community assets that thrive in Northern Kentucky. Companies will benefit from a robust technology infrastructure, community development initiatives and programs such as Vision 2015: Northern Kentucky's Blueprint for the Future, and Agenda 360: The Master Plan for Southwest Ohio. Together, these programs are paving the way toward a brighter future for the region. Learn more at Vision2015.org and Agenda360.org.



Northern Kentucky's 17% of the Cincinnati MSA population contributes 22% of new jobs created making Northern Kentucky a vibrant economic engine for both the Commonwealth of Kentucky and the Cincinnati MSA.



Access valuable information critical to expansion and relocation decisions with the site selector at NorthernKentuckyUSA.com. Perform customized site and building searches, view, create and print maps, as well as customize and analyze demographic and business data.



The region boasts many premium high-tech locations, such as Marydale, which offers immediate access to a regional workforce, efficient transportation and business amenities.

An immediate solution for real estate needs.

From vibrant urban locations to highly efficient suburban spots, Northern Kentucky, as part of the Cincinnati MSA, is rich in available business, real estate and planned development and re-development solutions. The region offers an extensive database of available sites and buildings, perfectly suited for professional offices and headquarters and 21st-century manufacturing and technology corporations looking to relocate, consolidate or expand. Access valuable demographic and business information critical to expansion, consolidation and relocation decisions at NorthernKentuckyUSA.com.



At the heart of the matter is opportunity.

Northern Kentucky is a vibrant community within the Greater Cincinnati metropolitan statistical area (MSA) that offers the best of urban living while maintaining its small-town charm. Rich in culture, recreation and economic opportunity, Northern Kentucky is a diverse metro area that truly is Opportunity Central.

Population

- Overall Cincinnati MSA population is 2.2 million, with nearly 17% residing in Northern Kentucky's Boone, Campbell and Kenton counties

Transportation

- Air – home to Cincinnati/Northern Kentucky International Airport, with five other major metro airports located within a two-hour drive
- Interstate – served by four major interstate highways (I-75, I-71, I-74 and I-275) in reach of 20 major metro areas within one day's drive, and 30 additional markets within two days
- Rail – home to the mainline services for CSX and Norfolk Southern railroads and the Cincinnati Intermodal Yard – more than 175 miles of mainline trackage serving local industry, moving more than two million rail cars per year
- Waterway – home to Port Cincinnati, the fifth largest inland port for domestic barge loads

Cost of Living

- Ranked lowest in the U.S., 10% less than the U.S. average (Source: CNBC North American Top States for Business, 2011)
- 2009 three-county housing average is \$212,944, 21.4% less than the U.S. average (Source: U.S. Census Bureau and Northern Kentucky MLS)

Cost of Business

- One of the lowest for cost of doing business in the eastern U.S. and fourth lowest overall (Source: CNBC North American Top States for Business, 2011)
- Ranked 19th best in the nation in 2011 for state business tax climate index, up 15 spots in two years (Source: Tax Foundation)

Education

- Nearly 100,000 students enrolled in 11 universities and community colleges within a 15-mile radius of Northern Kentucky
- 30% of the greater area's 25+-year-olds have bachelor's degrees, compared to a 27% national average
- Home to the College of Informatics at Northern Kentucky University, and Gateway Community & Technical College Center for Advanced Manufacturing, preparing and training the region's manufacturing workforce

Entertainment

- One of only 13 U.S. cities containing all five arts disciplines – ballet, opera, museums, symphony and theater
- Home to three professional sports organizations – Cincinnati Reds, Cincinnati Bengals and NASCAR Sprint Cup Racing



TRI-ED

Tri-County Economic
Development Corporation

NorthernKentuckyUSA.com

Northern Kentucky



Indiana

Ohio

Cincinnati

Newport

Covington

Florence

Kentucky



Transportation. Access from any direction.

The Cincinnati/Northern Kentucky International Airport (CVG), located in the heart of the region just minutes from multiple interstate systems, offers the travel options of a major-city airport without the big-city hassles, and is considered among the world's most convenient and efficient airports.

Northern Kentucky is also served by these regional airports:

- Lunken & Blue Ash airports in Cincinnati – offering charter services
- Louisville International Airport – which ranks as the third busiest in terms of cargo thanks to its UPS Worldport
- The Dayton International Airport – a significant regional air freight hub with the presence of FedEx and Excel Global
- Blue Grass Airport in Lexington

Located within 600 miles of more than 60% of the nation's population, the convergence of three major interstate highways within the I-275 beltway makes ground freight transportation a cost-effective and reliable option. More than 900 interstate common motor-freight carriers and 29 freight forwarders serve the area with 20 major metro areas within one day's truck-driving time, and 30 additional markets within second-day service.

By boat, plane, train or truck, Northern Kentucky's central location makes traveling to and from the region easy and affordable.



In 2009, DHL selected CVG as its hub, aggressively increasing international shipping opportunities to more than 120,000 destinations in more than 225 countries.



Northern Kentucky University's Griffin Hall at the College of Informatics

Higher Education

Within just a 100-mile radius is an ever-increasing pool of talented graduates from some of the country's most progressive colleges, universities and training centers:

- Northern Kentucky University
- University of Cincinnati
- Gateway Community & Technical College
- Cincinnati State Technical and Community College
- Thomas More College
- University of Louisville
- University of Kentucky
- Ohio State University
- Miami University
- University of Dayton
- Xavier University
- Wright State University

Higher ed meets higher tech at Northern Kentucky University's College of Informatics.

Northern Kentucky University's College of Informatics program educates students in understanding and applying knowledge to complex information and communication problems, graduating students who possess cutting-edge skills in information technology, and allowing local businesses easier access to employees who add immediate value to the bottom line. Learn more at Informatics.NKU.edu.

Gateway Community & Technical College – Center for Advanced Manufacturing.

Built specifically to serve the training needs of local manufacturers, Gateway Community & Technical College's Center for Advanced Manufacturing has the capacity to meet the training and retraining needs of the region's companies, with volume expected to top 10,000 workers and 400 companies annually. Learn more at Gateway.KCTCS.edu.



Cincinnati State Technical and Community College.

With an enrollment of 8,400 students, Cincinnati State offers strong Northern Kentucky connections. More than 800 employers participate in the co-op program, allowing students to gain the knowledge needed to be employable and successful in their chosen field. To discover more, visit CincinnatiState.edu.

Area research universities.

Area research universities, such as University of Cincinnati, University of Louisville and University of Kentucky, continue to expand knowledge and technology that create new industries and jobs. Along with developing talent, these area institutes are indispensable research centers, purchasers, economic magnets and community partners committed to Northern Kentucky's progress.



Many open office environments in Northern Kentucky's urban core appeal to the office and high-tech workforce.

Accelerate your growth.

Ever since Daniel Boone explored these territories in the early 19th century, those with an entrepreneurial spirit and a vision for the future have recognized the enormous potential that Northern Kentucky has to offer. Today, that sense of growth and expansion is alive and well. With a great innovation infrastructure and incubator programs such as the ezone, Northern Kentucky continues to foster the spirit of invention, exploration and expansion.

ezone

Since 2001, the ezone has assisted nearly 200 companies, helping raise more than \$120 million in grants, equity and forgivable loans for Northern Kentucky companies, creating more than 1,200 jobs in the local economy. To discover more, visit NorthernKentuckyezzone.com.



Northern Kentucky ezone.

Progressive entrepreneurial support.

A division of Northern Kentucky Tri-County Economic Development Corporation, the ezone provides support for both start-up entrepreneurs and established companies commercializing a new product, technology or process. This support includes grants, loans, forgivable loans and equity investments through the Kentucky Enterprise Funds and the Kentucky Department of Commercialization and Innovation. Learn more at NorthernKentuckyezzone.com.

Northern Kentucky University Entrepreneurship Institute.

The Fifth Third Bank Entrepreneurship Institute at Northern Kentucky University offers graduate and undergraduate academic and outreach programs in entrepreneurship, equipping the next generation with the tools needed to successfully navigate the 21st-century business world. Learn more at 53ei.org.



For companies with research and development needs, high-tech functions are surrounded by a climate of innovation and entrepreneurship in Northern Kentucky.





Fidelity Investments (above) and Ticona (below).



Enhance your support.

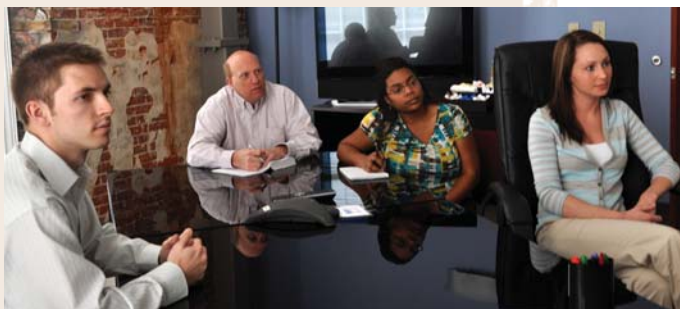
Whether you are consolidating, expanding or relocating your business, you can hit the ground running in Northern Kentucky. The region offers a qualified and dependable workforce well-versed in the needs of the 21st century, flexible and aggressive incentive programs, and regional cooperation that provides a supportive business environment and economic development to eligible firms – all in a one-stop solution that makes any transition as easy as possible.

Favorable taxes and incentives.

From leading corporations to entrepreneurial start-ups, Northern Kentucky businesses enjoy a favorable state tax climate that significantly lessens the burden on businesses. The Kentucky Cabinet for Economic Development offers a variety of aggressive incentive and assistance programs through city and county governments for qualifying companies. To learn more, visit NorthernKentuckyUSA.com.

High-tech employers can take advantage of a skilled and able workforce, as well as a variety of state and local business incentives.





A workforce ready to get the job done.

- A 13% population growth rate from 2000 to 2010, outpacing the rest of Kentucky (7.4%) and the U.S. average (9.7%) (Source: U.S. Census 2010)
- A diversified economy: 43.7% of total jobs in the business sector, 44.3% of total jobs in the service industries, and 12.0% of total jobs in manufacturing (Source: Workforce Kentucky, 3rd Qtr. 2009)
- A younger workforce with a median age of 35.9 years, compared to 36.5 for the U.S. (Source: U.S. Census, American Community Survey, 2009)

Financial incentives that benefit Northern Kentucky businesses.

For more information and a complete list of incentives that benefit Northern Kentucky businesses, visit NorthernKentuckyUSA.com or call Tri-ED at 888-874-3365.

KY Business Investment Program (KBI)	KY Reinvestment Act (KRA)	KY Enterprise Initiative Act (KEIA)	Bluegrass Training Skills
<p>Eligible manufacturing, agribusiness, regional or national headquarters and certain non-retail service or technology activities may qualify for up to 10 years.</p> <p>Offers tax incentives taken as a credit against the Kentucky income tax or a wage assessment of the gross wages of each employee.</p> <p>Requires a minimum of 10 new full-time Kentucky resident jobs and an investment of at least \$100,000 in eligible costs.</p>	<p>Eligible companies must be permanent Kentucky companies engaged in manufacturing.</p> <p>Receive approved costs for recovery and related spending costs up to:</p> <ol style="list-style-type: none"> 1. 50% of the eligible equipment and costs 2. 100% of the job skills upgrade training costs <p>The incentive is available for up to 10 years and may be recovered via Kentucky income tax credits of up to 100% of tax imposed on the corporate income or limited liability tax generated by or arising from the projects.</p>	<p>A sales tax refund on building and construction materials, research and development equipment, as well as electronic processing equipment.</p> <p>A KEIA-approved company is eligible with a minimum investment of \$500,000.</p> <p>Refund of sales and use tax paid for:</p> <ol style="list-style-type: none"> 1. Building and construction materials 2. Research and development equipment 3. Electronic processing equipment costing a minimum of \$50,000 	<p>Improves and promotes employment opportunities for the citizens through training grants and investment credits for skills training projects.</p> <p>Funds are available to assist employers with training costs. The collaborative efforts create partnerships with businesses and industries that absorb a share of project costs.</p> <p>Allows companies to recover 50% of their approved costs for occupational and skills upgrade training through an income tax credit.</p>

Source: ThinkKentucky.com





Kentucky's business tax climate ranking rose faster than any other state in the past two years, up 15 spots to 19th Best Tax Climate in the nation. Consult our tax tool at NorthernKentuckyUSA.com to determine your company's cost savings and the advantages of a Northern Kentucky location.

(Source: Tax Foundation's 2011 State Business Tax Climate Index)

Magnify your success.

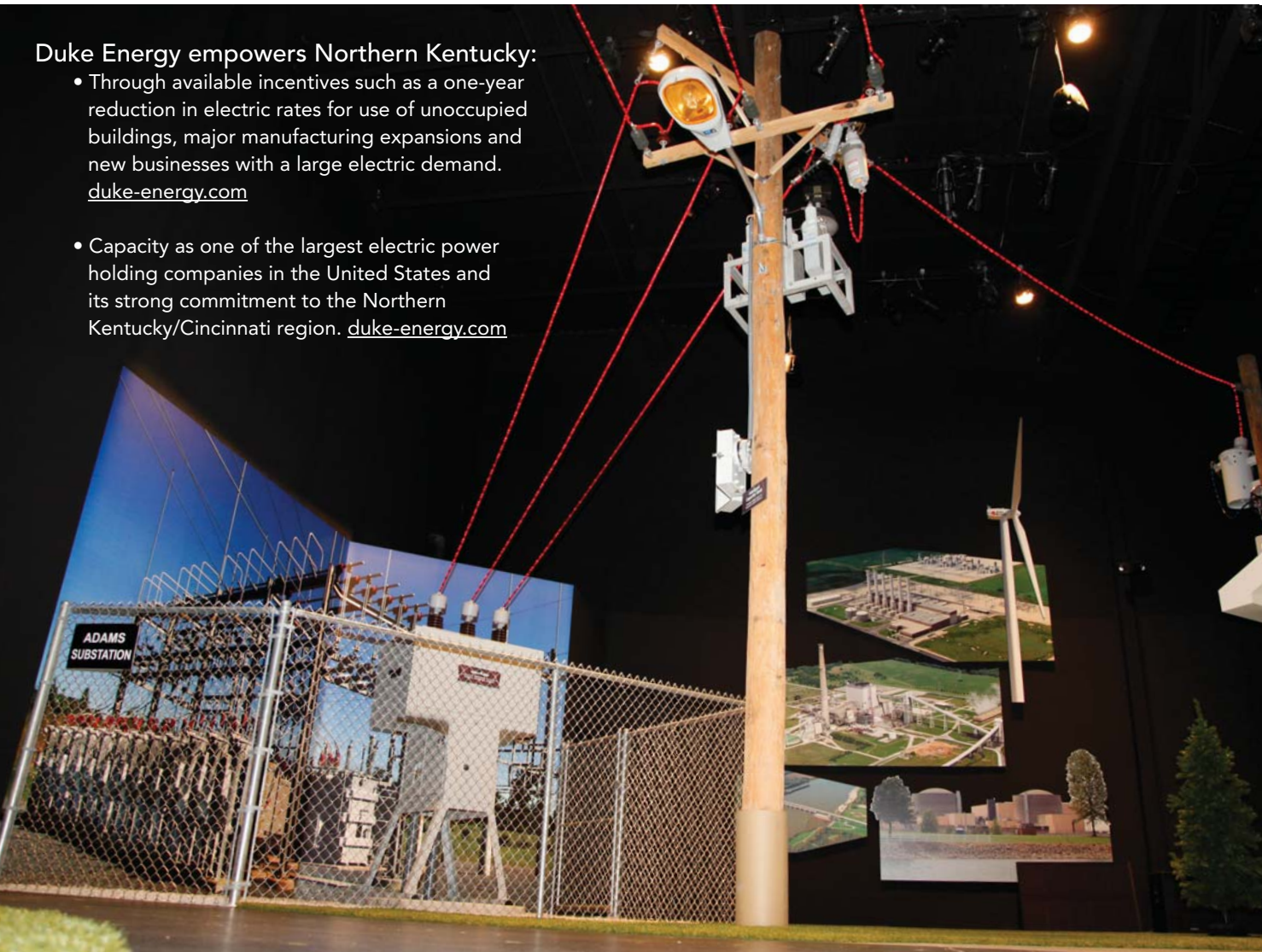
In Northern Kentucky, we've chosen to lead when it comes to making your relocation a success. The region's technological and power infrastructure, along with our low cost of doing business and high quality of life, makes Northern Kentucky the right location for tech-centric companies on the move.

State-of-the-art telecommunications.

Northern Kentucky boasts one of the area's only true national, next-generation communications systems. Cincinnati Bell offers more than 90% digital service to all customers and an extensive network of self-healing fiber-optic rings to business customers. Include Time Warner Telecom, Nuvox and 18 other telecommunications providers, and you can see how the region is fully covered by comprehensive, high-tech networking solutions. Businesses also enjoy the benefits of SONET self-healing ring technologies, ensuring minimal downtime events.

Duke Energy empowers Northern Kentucky:

- Through available incentives such as a one-year reduction in electric rates for use of unoccupied buildings, major manufacturing expansions and new businesses with a large electric demand. duke-energy.com
- Capacity as one of the largest electric power holding companies in the United States and its strong commitment to the Northern Kentucky/Cincinnati region. duke-energy.com



Low-cost utilities.

In a recent study released by the Small Business and Entrepreneurship Council (April 2009), Kentucky's energy costs ranked fourth lowest in the nation.

- Electric power costs in the industry sector also ranked fourth lowest in the nation in 2010 (Source: U.S. Energy Information Administration)
- Industrial power costs are second lowest when compared to states east of the Mississippi River, and 30% lower than the U.S. average from April 2009 to April 2010 (Source: Energy Information Administration/Electric Power Annual)
- Kentucky is ranked second lowest in average retail price for electricity (Source: Energy information Administration, 2010)
- Electricity prices for residential, commercial and industrial all fall below the national average (Source: Energy Information Administration, June 2010)

Duke Energy's Envision Center delivers more "intelligent power" through a smart grid system, creating renewable energy, reduced customer consumption and improved quality.



As an additional energy provider, Owen Electric services 151,000 Kentuckians over a nine-county area including Boone, Campbell and Kenton counties in Northern Kentucky.

Quality of life – our “best kept secret.”

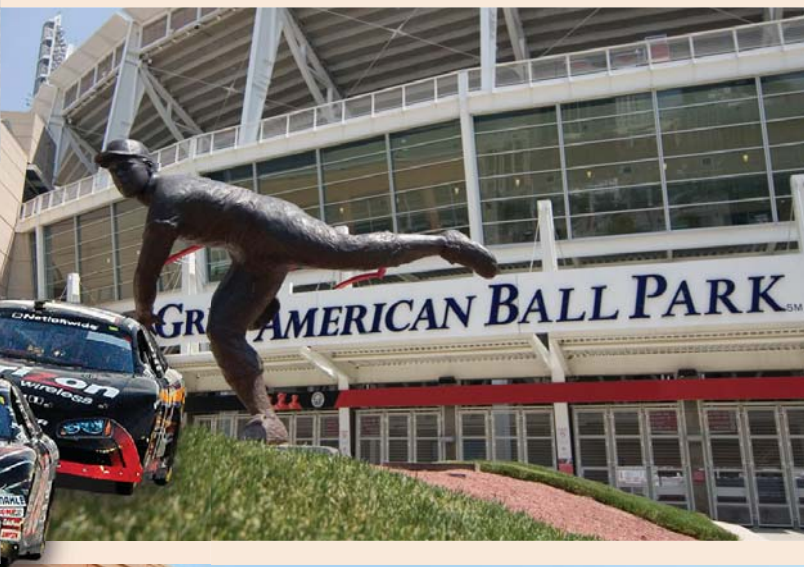
Northern Kentucky is a vibrant, unique region offering both the fast-paced excitement of Cincinnati and the relaxed lifestyle and quiet beauty of Kentucky’s rolling hills. The slower pace of small communities makes this area a very pleasant place to live, where friendliness is just a way of life.

From symphony pops concerts, art museums, the ballet and a new performing arts center to historic sightseeing, shopping, world-renowned zoo, aquarium and even riverboat cruises, Northern Kentucky offers a plethora of attractions that will keep you moving year-round.



Consistently ranked as one of the best places to live, work and raise a family from *Fortune*, *Money* and *Places Rated Almanac*, the region’s very affordable cost of living and the variety of cultural, recreational, entertainment and sports opportunities are among the reasons why the area is recognized nationally for livability:

- **Housing** – Sophisticated urban or quaint residential, new single-family homes within the three-county area cost 21.4% less than the national average in 2009 (Source: U.S. Census Bureau and Northern Kentucky MLS)
- **Health Care** – Home to 28 hospitals, including Cincinnati Children’s Hospital, a world-renowned pediatric medical center; University Hospital at University of Cincinnati, the nation’s premier teaching hospital; and St. Elizabeth Healthcare, a nationally recognized heart health and cancer center
- **Culture** – Some of the nation’s best-known and oldest performing and visual arts organizations, including museums, ballet, opera, outdoor concert facilities and arts centers
- **Schools** – Quality primary, middle and high school education options with close to 100 public schools and nearly 50 private and public schools, many designated as Blue Ribbon Schools by the U.S. Department of Education
- **Entertainment** – From roller coasters and comedy clubs to four-star dining and vibrant nightlife, entertainment venues and options perfect for families or individuals, young or old
- **Sports** – Home to MLB’s Cincinnati Reds, NFL’s Cincinnati Bengals, NASCAR Sprint Cup racing at the Kentucky Speedway, Thoroughbred racing at Keeneland, River Downs, Turfway Park, Churchill Downs, and more
- **Parks** – One of the largest park systems per capita found in a major metropolitan city, with more than 25,000 acres of park and recreational land within the Greater Cincinnati and Northern Kentucky area



Great American Ball Park is home to baseball's oldest professional franchise, the Cincinnati Reds.



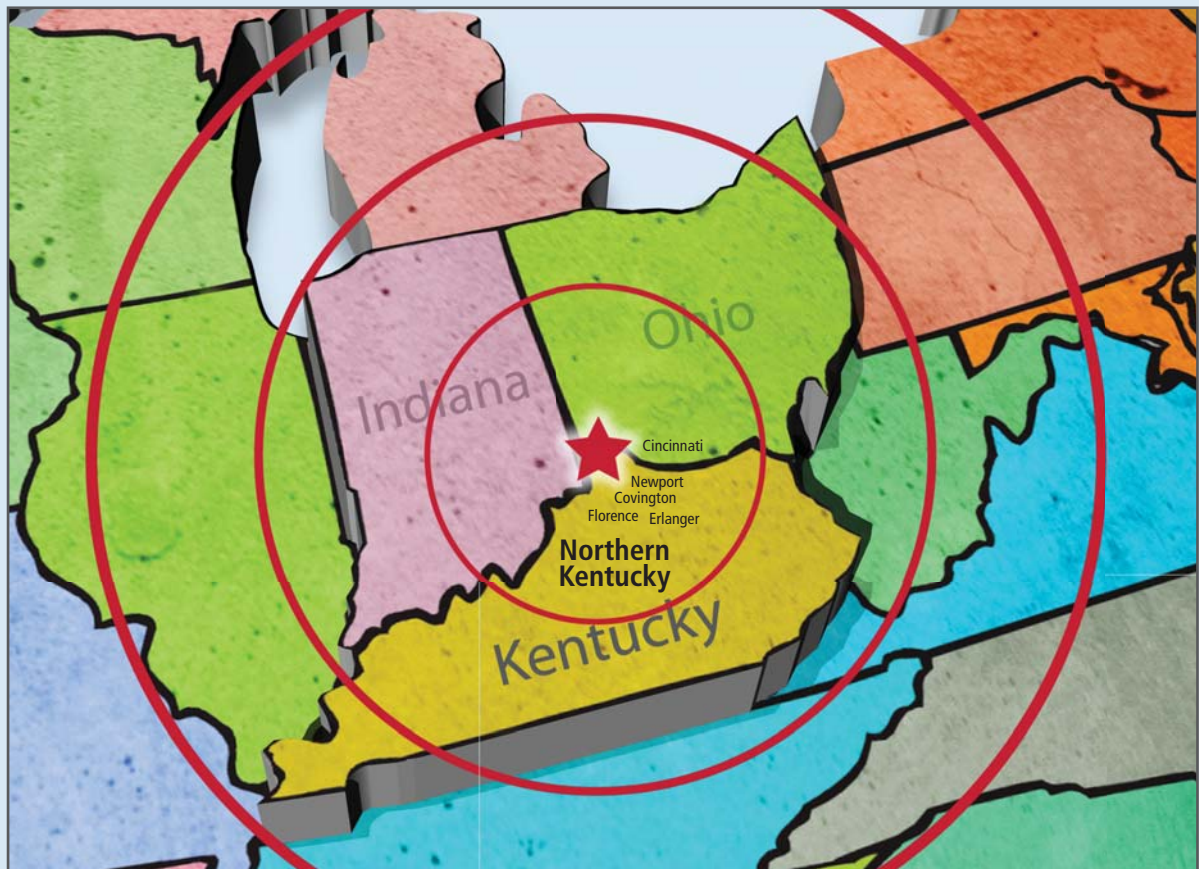
There's something for everyone at Newport on the Levee, an entertainment, dining and shopping district offering an impressive variety of things to do and see, regardless of age.



Northern Kentucky's arts and culture scene is a growing area widely recognized for its thriving community of artists, galleries, theaters, cultural organizations and historic preservation.



To find the original Hofbräuhaus, you'd have to travel to Munich, Germany! Authentic German fare and beer brewed on-site are at North America's first Hofbräuhaus in Newport, where it's Bavaria every night.



Northern Kentucky Tri-ED: Regional Cooperation, National Recognition.

The Northern Kentucky Tri-County Economic Development Corporation was formed in 1987 as a nonprofit entity to pioneer a regional, cooperative approach to economic development for Boone, Campbell and Kenton counties in Northern Kentucky.

Today, the corporation's integral role has helped Northern Kentucky become a nationally recognized success story – garnering impressive reviews as a “Top Ten Economic Development Group” from *Site Selection Magazine* five times as a stand-alone organization and nine times as part of the Cincinnati MSA – and a thriving cultural and economic engine in the Commonwealth of Kentucky and the Greater Cincinnati region.

Contact us and begin expanding
your horizons in Northern Kentucky.

Northern Kentucky Tri-County Economic
Development Corporation
300 Buttermilk Pike, Suite 332
P.O. Box 17246
Covington, KY 41017
Phone: 859-344-0040
Toll-Free: 1-888-874-3365
Fax: 859-344-8130

NorthernKentuckyUSA.com

