



CENTRAL FLORIDA INNOVATION DISTRICT



At the heart of the I-4 high-tech corridor is the Central Florida Innovation District, leveraging major investments in anchor tenants and building on industry-leading technology developed by Florida's only state university focused solely on STEM education, Florida Polytechnic University, and SunTrax, a large-scale, cutting-edge facility dedicated to the research and testing of emerging transportation technology.

A new community that welcomes the knowledge economy, fosters an ecosystem for innovation and values proximity, connectivity and collaboration.

INDUSTRY CATALYSTS

-  Health Sciences & Technology
-  Information Sciences & Engineering
-  Advanced Manufacturing
-  Mobility & Innovation

COMMUNITY PARTNERS

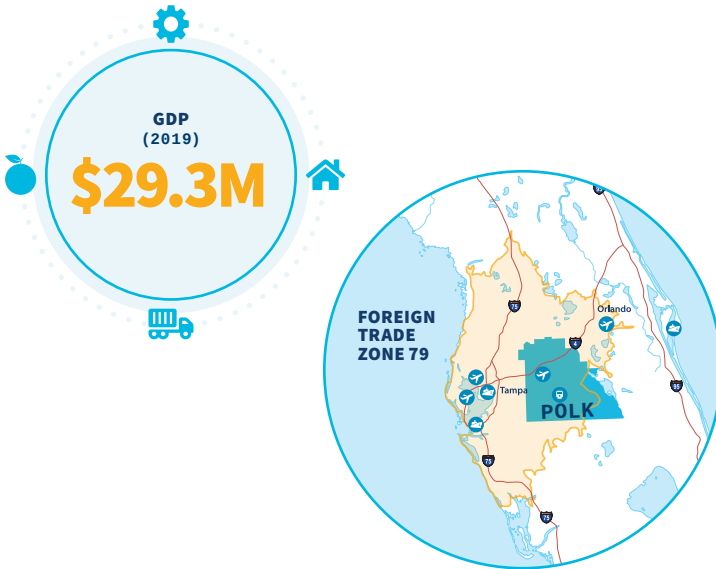


For more information, visit CENTRALFLORIDAINNOVATIONDISTRICT.COM



GLOBAL TRADE & INVESTMENT

Central Florida offers expedited movement of goods into and out of the region. Anchoring the high-tech I-4 corridor between Tampa and Orlando, Polk County is one of the state's most connected regions—with numerous airports, rail lines, highways and ports all located within an hour's drive of the county.



FEATURED INTERNATIONAL COMPANIES



For more information, visit [CFDC.ORG/DO-BUSINESS-HERE/GLOBAL-INVESTMENT](https://www.cfdc.org/do-business-here/global-investment)



LOGISTICS, SUPPLY CHAIN & DISTRIBUTION

Located in the center of a state, along the I-4 corridor between Tampa and Orlando, Polk County is one of the state's most connected regions and the ideal place for logistics, supply chain and distribution companies to locate.

As the epicenter of Florida's distribution chain network, companies in Polk can reach nearly 22 million people with same-day delivery, giving them an advantage over competitors in the growing e-commerce and delivery markets.

 **10+**

MILLION PEOPLE
WITHIN
100 MILES



HOME TO THE
CSX CENTRAL
FLORIDA
INTERMODAL
LOGISTICS CENTER

 **3**

DEEPWATER
SEAPORTS
WITHIN
75 MILES

 **4**

INTERNATIONAL
AIRPORTS
WITHIN
60 MILES

FEATURED EMPLOYERS



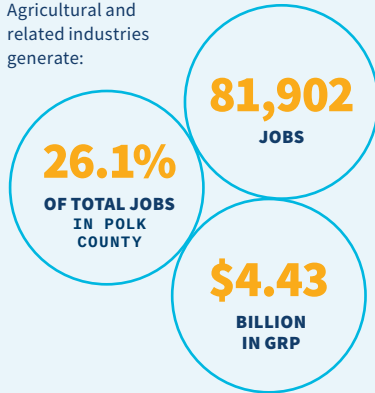
For more information, visit [CFDC.ORG/TARGET-SECTORS/LOGISTICS-SUPPLY-CHAIN-DISTRIBUTION](https://www.cfdc.org/target-sectors/logistics-supply-chain-distribution)



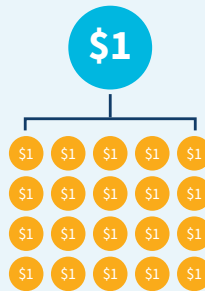
AGRIBUSINESS & AGRITECHNOLOGY

With a strong agricultural background in citrus and phosphate, well-developed infrastructure and logistical expertise, Polk County's agribusiness and agritech industries are ripe with opportunities for success.

Agricultural and related industries generate:



It is estimated that for **every \$1 invested** in agricultural research & extension, there is a **return of \$20 to the community.**



As of 2019 - UF/IFAS Polk County

FEATURED EMPLOYERS



For more information, visit FD.C.ORG/TARGET-SECTORS/AGRIBUSINESS-AGRITECHNOLOGY



AVIATION & AEROSPACE

With an eye to the sky, Polk County offers proximity to major infrastructure access points including the Orlando International Airport, Tampa International Airport, Lakeland Linder International Airport and three regional airports propelling our competitiveness in aviation and aerospace – meaning expertise and efficiencies for companies looking to grow.



INTERNATIONAL AIRPORTS WITHIN 60 MILES



REGIONAL AIRPORTS WITHIN THE COUNTY



SPACE PORTS IN THE STATE OF FLORIDA



FLIGHT ACADEMIES IN THE STATE OF FLORIDA

FEATURED EMPLOYERS



For more information, visit [CFDC.ORG/TARGET-SECTORS/AVIATION-AEROSPACE](https://www.floridacfd.org/target-sectors/aviation-aerospace)



HEALTH SCIENCES

With five major medical centers and a host of specialty clinics, healthcare is one of Polk County's fastest-growing industries. From health technology and informatics to robotic microsurgery, Polk County's health sciences industry continues to evolve.

This progressive sector boasts partnerships with major research institutions and cutting-edge medical centers, a graduate medical education program and a family medicine residency. With access to more than 10 million people within a 100-mile radius, the region is an ideal location for patient-based research.

FEATURED EMPLOYERS



For more information, visit [CFDC.ORG/TARGET-SECTORS/HEALTH-SCIENCES](https://www.cfdc.org/target-sectors/health-sciences)



ADVANCED MANUFACTURING

With access to an unrivaled distribution network and extensive multimodal infrastructure, Polk County manufacturers are poised to succeed.

More than 18,000 people work in Polk County's manufacturing industry and our vocational schools, state college, and universities are top producers of STEM graduates. Polk County's talent pipeline is ever-growing and trained for success.

FLORIDA IS THE COUNTRY'S

3RD BEST STATE FOR MANUFACTURING

ACCORDING TO THE BUREAU OF LABOR STATISTICS

FEATURED EMPLOYERS



POLK STATE
Corporate College



For more information, visit [CFDC.ORG/TARGET-SECTORS/ADVANCED-MANUFACTURING](https://www.cfdc.org/target-sectors/advanced-manufacturing)



BUSINESS SERVICES

Polk County's cost-effective business climate can help your company succeed. Ideally located between the Orlando and Tampa markets, Polk County boasts lower business costs, customizable workforce development initiatives and responsive incentive programs.

FLORIDA RANKED

#2

BEST STATE TO
START A BUSINESS

SEEKCAPITAL.COM/BLOG/
BEST-STATES-TO-START-BUSINESS



LAKELAND RANKED AS
ONE OF THE BEST PLACES
TO START A BUSINESS

INC.COM/SURGE-CITIES

FEATURED EMPLOYERS



For more information, visit [CFDC.ORG/TARGET-SECTORS/BUSINESS-SERVICES](https://www.cfdc.org/target-sectors/business-services)



RESEARCH & TECHNOLOGY

Maximizing its Central Florida location, infrastructure and talent assets, Polk County is ready to drive the future of research and technology.

Beyond infrastructure, Polk County is home to the Central Florida Innovation District with anchor institutions, Florida Polytechnic University, focusing solely on STEM related degrees and high-demand, tech-enabled occupations, and SunTrax.

FEATURED EMPLOYERS

M^oLEKULE



For more information, visit [CFDC.ORG/TARGET-SECTORS/RESEARCH-TECHNOLOGY](https://www.cfdc.org/target-sectors/research-technology)



ENTERTAINMENT, ARTS & TOURISM

As the home to Florida's first amusement park, it's no surprise that Polk County is a tourism hub, offering something for everyone with an easy drive to Central Florida attractions and beaches.

Polk County welcomes over 4.9 million visitors annually and is the state's leader in recruiting and hosting amateur sporting events, generating \$149+ million in economic impact from 261 events.

FEATURED ATTRACTIONS



For more information, visit [CFDC.ORG/TARGET-SECTORS/ENTERTAINMENT-ARTS-TOURISM](https://www.cfdc.org/target-sectors/entertainment-arts-tourism)